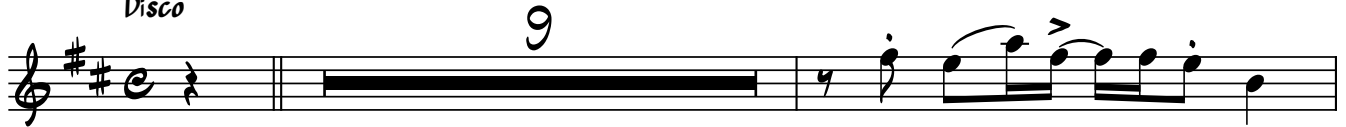


Alto Sax

# YMCA

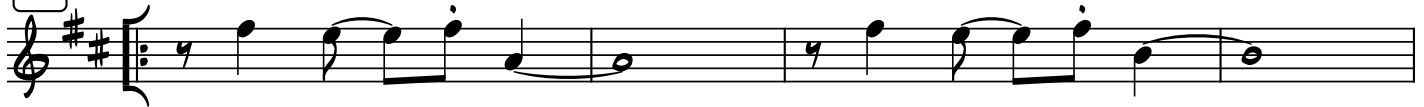
The Village People

*Disco*

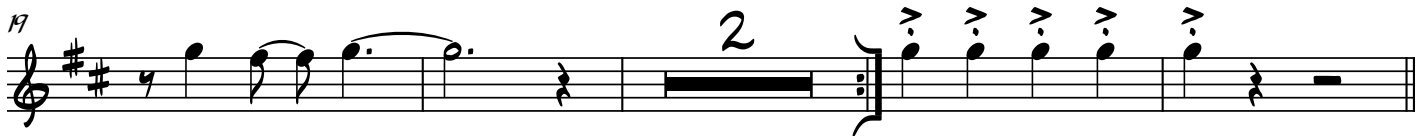


**A**

(Verse 1)



17



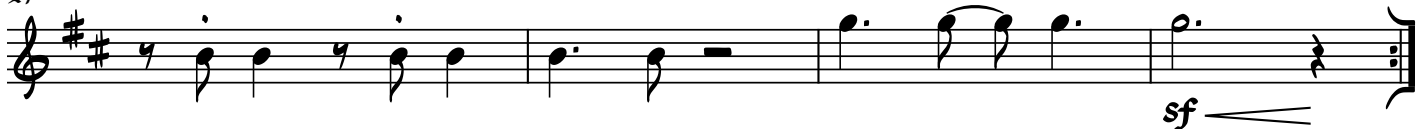
**B**

(Chorus 1)



27

*Tacet 2ndx*



**C** (Verse 2)

37

3

**D** (Chorus 2)

47

Tacet 2ndx

sf

**E** (Verse 3)

55

3

**F** (Chorus 3)

Play 6 times

65

Tacet 2ndx

Play 6 times

Y - M - C - A

Baritone Sax

# YMCA

The Village People

Disco 8

11

A (Verse 1) 4

17 2

B (Chorus 1)

27 Tacet 2nd x sf

**C** (Verse 2) 4

37 2

**D** (Chorus 2)

47 Tacet 2ndx sf

**E** (Verse 3) 4

55 2

(Chorus 3) **F** Play 6 times

65 Play 6 times Y - M - C - A

Bass

# YMCA

The Village People

Disco C5

7 (Horns) C9sus4

(Verse 1)  
A F Dm

17 Bb C/E Bb/D C Bb F/A C/E C9sus4

(Chorus 1)  
B F Dm

27 Gm Gm(maj7) Gm7 Gm6 Csus4

(Verse 2)  
C F Dm

37 Bb C/E Bb/D C Bb F/A C/E C9sus4

(Chorus 2)

D

F

Dm

47 Gm Gm(maj7) Gm7 Gm6 Csus4 C7 Csus4

(Verse 3)

E

F

Dm

55 Bb C/E Bb/D C Bb F/A C/E C9sus4

(Chorus 3)

Play 6 times

F

F

Dm

65 Gm Gm(maj7) Gm7 Gm6 Csus4 C7 C9sus4 Play 6 times

69 F6 F F6 F

Y - M - C - A

Drum Set

# YMCA

The Village People

Disco

6

(Horns)

12

A (Verse 1)

18

B (Chorus 1)

Fill

28

**C**

(Verse 2)

37

**D**

(Chorus 2)

47

**E**

(Verse 3)

57

**F**

(Chorus 3)

Play 6 times

65

Play 6 times



Guitar

# YMCA

The Village People

Disco

C5

A musical staff in treble clef with a key signature of one flat (Bb) and a common time signature (C). It begins with a treble clef, a key signature change to one flat, and a common time signature. The first measure contains a quarter rest. The following six measures each contain a diamond-shaped marker on the first line of the staff, with a slur spanning across all six diamond markers.

7

(Horns)

C9sus4

A musical staff in treble clef with a key signature of one flat (Bb). It begins with a treble clef and a key signature change to one flat. The first measure contains a quarter rest. The following six measures each contain a diamond-shaped marker on the first line of the staff, with a slur spanning across all six diamond markers.

**A** (Verse 1)

F

Dm

Bb

A musical staff in treble clef with a key signature of one flat (Bb). It begins with a treble clef and a key signature change to one flat. The staff contains six measures of rhythmic slashes, indicating a drum pattern. Above the first measure is a box containing the letter 'A' and the text '(Verse 1)'. Above the first two measures is the chord 'F', above the next two is 'Dm', and above the last two is 'Bb'.

A musical staff in treble clef with a key signature of one flat (Bb). It begins with a treble clef and a key signature change to one flat. The staff contains notes with accents (>) and slurs. Above the notes are the following chords: C/E, Bb/D, C, Bb, F/A, C/E, and C9sus4. The measure number '21' is written at the beginning of the staff.

**B** (Chorus 1)

F

Dm

A musical staff in treble clef with a key signature of one flat (Bb). It begins with a treble clef and a key signature change to one flat. The staff contains four measures of rhythmic slashes, indicating a drum pattern. Above the first measure is a box containing the letter 'B' and the text '(Chorus 1)'. Above the first two measures is the chord 'F', and above the last two is 'Dm'.

A musical staff in treble clef with a key signature of one flat (Bb). It begins with a treble clef and a key signature change to one flat. The staff contains four measures of rhythmic slashes, indicating a drum pattern. Above the measures are the following chords: Gm, Gm(maj7), Gm7, Gm6, and Csus4. The measure number '27' is written at the beginning of the staff.

(Verse 2)

**C** F Dm Bb

37 C/E Bb/D C Bb F/A C/E C9sus4

(Chorus 2)

**D** F Dm

47 Gm Gm(maj7) Gm7 Gm6 C9sus4 C7 C9sus4

(Verse 3)

**E** F Dm Bb

57 C/E Bb/D C Bb F/A C/E C9sus4

(Chorus 3)

Play 6 times

**F** F Dm

65 Gm Gm(maj7) Gm7 Gm6 C9sus4 C7 C9sus4 Play 6 times F6 F F6 F

Y - M - C - A

Tenor Sax

# YMCA

The Village People

Disco

8

11

A (Verse 1)

17 2

B (Chorus 1)

27 Tacet 2ndx

sf

**C** (Verse 2)

37 **3**

**D** (Chorus 2)

47 *Tacet 2ndx*

**E** (Verse 3)

55 **3**

**F** (Chorus 3)  
Play 6 times

65 *Tacet 2ndx* **Play 6 times**

Y - M - C - A

Trombone

# YMCA

The Village People

Disco

8

11

A (Verse 1)

4

17

2

B (Chorus 1)

27

Tacet 2ndx

sf

**C** (Verse 2) 4

37 2

**D** (Chorus 2)

47 Tacet 2ndx sf

**E** (Verse 3) 4

55 2

(Chorus 3) **F** Play 6 times

65 Tacet 2ndx Play 6 times

Y - M - C - A

Trumpet 1

# YMCA

The Village People

Disco

8

11

A (Verse 1)

17

2

B (Chorus 1)

27

Tacet 2ndx

sf

**C** (Verse 2)

37 **3**

**D** (Chorus 2)

47 *Tacet 2ndx*

**E** (Verse 3)

55 **3**

**F** (Chorus 3)  
Play 6 times

65 *Play 6 times*

Y - M - C - A



Trumpet 2

# YMCA

The Village People

Disco

8

11

A (Verse 1)

17

2

B (Chorus 1)

27

Tacet 2ndx

sf

**C** (Verse 2)

37

**D** (Chorus 2)

47 *Tacet 2ndx*

**E** (Verse 3)

55

**F** (Chorus 3)  
Play 6 times

65 *Play 6 times*

Y - M - C - A