

Alto Saxophone

AT LAST

Etta James

Arranged by Maurizio Rossetto

Rubato ♩ = 60

A

Ballad 12/8 feel ♩ = 60

B

Baritone Sax

AT LAST

Etta James

Arranged by Maurizio Rossetto

Rubato ♩ = 60

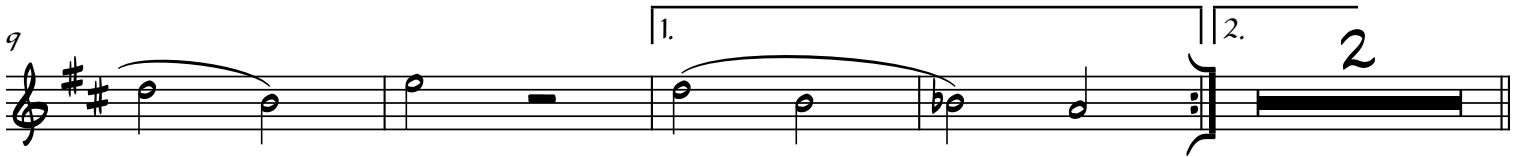


A

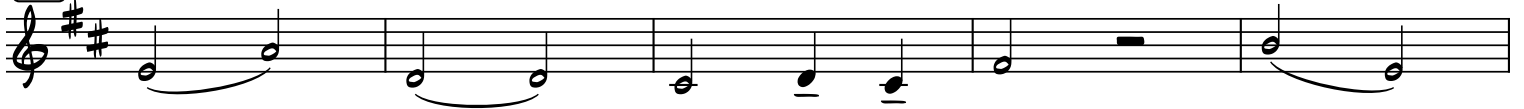
Ballad 12/8 feel ♩ = 60



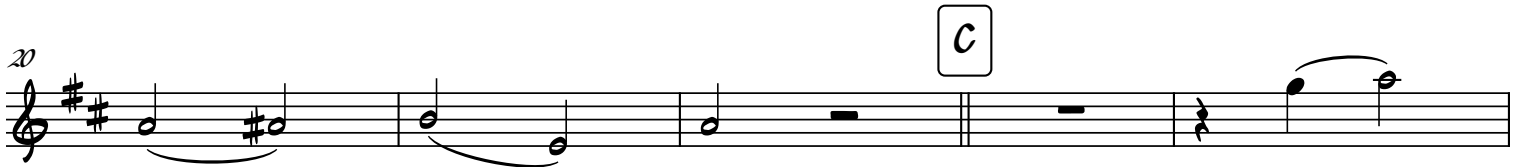
9



B



20



25

Straight



D

rit.



AT LAST

Etta James

Arranged by Maurizio Rossetto

Rubato ♩ = 60

F F7/A B \flat B \circ 7 F/C D7(add9) D \flat 7 C

A Ballad 12/8 feel ♩ = 60
F Dm7 Gm C+5 F Dm7 Gm C7(add#9) C7 F Dm7

10 Gm C+5 1. F D7(b9) D \flat 7 C7 2. Fmaj9 B \flat Fmaj9

B Gm7 C7 F(add9) F6 E7 F7 E7 Am Dm7 G7

20 C C# \circ Dm7 G7 C7 **C** F Dm7 Gm C+5

25 F Dm7 Gm C7(add#9) C7 F Dm7 Gm

D F F7/A B \flat B \circ 7 F/C D7(b9) rit. D \flat 7 C7 Fmaj9 Fmaj9

Tenor Sax

AT LAST

Etta James

Arranged by Maurizio Rossetto

Rubato $\text{♩} = 60$ Straight

A Ballad 12/8 feel $\text{♩} = 60$

9

B

21

C

27

Straight

D

31

Straight rit.

Trombone

AT LAST

Etta James

Arranged by Maurizio Rossetto

Rubato $\text{♩} = 60$ Straight

A Ballad 12/8 feel $\text{♩} = 60$ *p*

10 1. 2.

B

20 **C**

25 Straight

D Solo *f*

31 rit.

Trumpet in Bb 1

AT LAST

Etta James

Arranged by Maurizio Rossetto

Rubato ♩ = 60

A Ballad 12/8 feel ♩ = 60
harmon mute stem in

1. 2. Straight

B open

C harmon mute stem in

28 **D** rit.

Trumpet in Bb 2

AT LAST

Etta James

Arranged by Maurizio Rossetto

Rubato ♩ = 60

A Ballad 12/8 feel ♩ = 60
harmon mute stem in

1. 2. Straight

B open

C harmon mute stem in

28 **D** rit.

Upright Bass

AT LAST

Etta James

Arranged by Maurizio Rossetto

Rubato ♩ = 60

Orch.

F F7/A B \flat B \circ 7 F/C D7(add9) D \flat 7 C

A Ballad 12/8 feel ♩ = 60
F Dm7 Gm C+5 F Dm7 Gm C7(add#9) C7

9 F Dm7 Gm C+5 | 1. F D7(b9)

12 D \flat 7 C7 | 2. Fmaj9 B \flat Fmaj9

B Gm7 C7 F(add9) F6 E7 F7 E7

18 Am Dm7 G7 C C#°

21 Dm7 G7 C7

C F Dm7 Gm C+5 F Dm7

26 Gm C7(add#9) C7 F Dm7 Gm

D F F7/A Bb B°7

31 F/C D7(b9) rit. Db7 C7 Fmaj9 Fmaj9