

33 2

Horns soli (opt. guit. solo)

E

f

40

43

F

mf

49

Vocal break

a tempo

G

Conducted

a tempo

Bari Sax

WHEN A MAN LOVES A WOMAN

Bette Midler

Arranged by Maurizio Rossetto

12/8 ballad

4

A

3x's

4

3x's

3

B

17

C

25

D

33 2

Horns soli (opt. guit. solo)

E

40

43

F

mf

49

Vocal break a tempo

G

Conducted a tempo

Bass

WHEN A MAN LOVES A WOMAN

Bette Midler

Arranged by Maurizio Rossetto

12/8 ballad

Db Ab/C Bbm Db/Ab Gb Absus9 Ab Db Ab

3x's

A Db Ab/C Bbm Db9/Ab Gb Absus9 Ab Db Ab 3x's

9 Db Ab/C Bbm Db9/Ab Gb Absus9 Ab Db Db7

B Gb Db Db7 Sim. Gb

16 Db Db7 Gb Db F7/C Bbm

17 Eb7 Ab7sus9 Ab+5

C

Db Ab/C Bbm Db9/Ab Gb Absus9 Ab Db Ab



25

Db Ab/C Bbm Db9/Ab Gb Absus9 Ab Db Db7



D

Gb Db Db7 Gb



32

Db Db7 Gb Db F7/C Bbm



35

Eb7 Eb7sus4 Eb7 Absus9 Ab+5



Horns soli (opt. guit. solo)

E

F#m9 B9sus4 Emaj7 C#m7 F#m9 B9sus4



40 Emaj7 E7 A A#°

42 E/B G#7/C C#m F#sus9 F#

44 Asus9

[F] D A/C# Bm D9/A G Asus9 A D A

49 D A/C# Bm D9/A G Asus9 Vocal break a tempo

[G] D A/C# Bm D9/A G A9sus4 Conducted

57 a tempo

Drums

WHEN A MAN LOVES A WOMAN

Bette Midler

Arranged by Maurizio Rossetto

12/8 ballad

Time

12/8

(4)

A

3x's

(4)

3x's

9

(4)

B

(4)

17

(4)

C Time

(4)

25

(8)

D

(4)

33

E Horns soli (opt. guit. solo)

(4)

41

(8)

F

(4)

50

Vocal break

a tempo

Fill

G Time

a tempo

Conducted

Fill

Guitar

WHEN A MAN LOVES A WOMAN

Bette Midler

Arranged by Maurizio Rossetto

12/8 ballad

Db Ab/C Bbm Db/Ab Gb Absus9 Ab Db Ab




3x's

A Db Ab/C Bbm Db9/Ab Gb Absus9 Ab Db Ab 3x's



9 Db Ab/C Bbm Db9/Ab Gb Absus9 Ab Db Db7



B Gb Db Db7 Gb Db Db7



17 Gb Db F7/C Bbm Eb7 Ab7sus9 Ab+5



C Db Ab/C Bbm Db9/Ab Gb Absus9 Ab Db Ab



25 Db Ab/C Bbm Db9/Ab Gb Absus9 Ab Db Db7



D Gb Db Db7 Gb Db Db7 Gb

34 Db F7/C Bbm Eb7 Eb7sus4 Eb7 Absus9 Ab+5

Horns soli (opt. guit. solo)

E F#m9 B9sus4 Emaj7 C#m7 F#m9 B9sus4 Emaj7 E7

41 A A#° E/B G#7/C C#m F#sus9 F# Asus9

F D A/C# Bm D9/A G Asus9 A D A D A/C#

50 Bm D9/A G Asus9 Vocal break a tempo 8va

Solo end solo Conducted a tempo

G D A/C# Bm D9/A G A9sus4 D

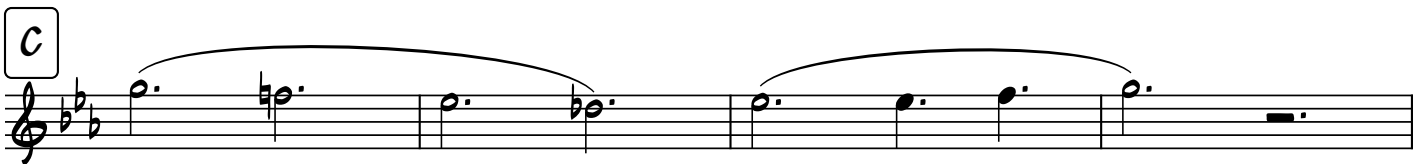
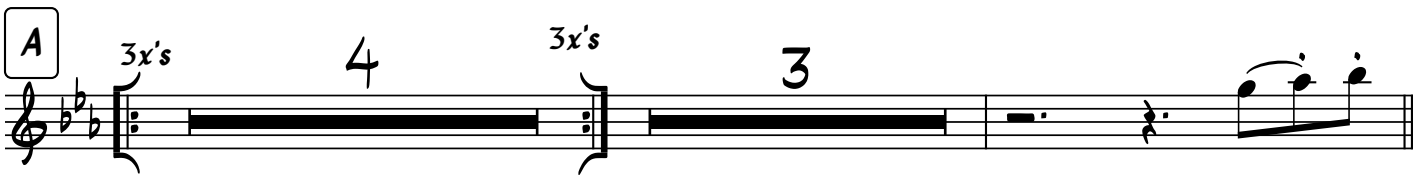
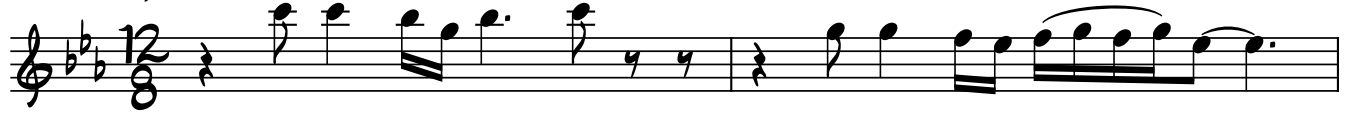
Tenor

WHEN A MAN LOVES A WOMAN

Bette Midler

Arranged by Maurizio Rossetto

12/8 ballad



D

33

E Horns soli (opt. guit. solo)

40

43

F

49

G

Trombone

WHEN A MAN LOVES A WOMAN

Bette Midler

Arranged by Maurizio Rossetto

12/8 ballad

4

A

3x's 4 3x's 3

B

17

C

25

D

33

2

Horns soli (opt. guit. solo)

E

f

40

43

43

mf

F

mf

49

Vocal break

a tempo

G

Conducted a tempo

Trumpet I

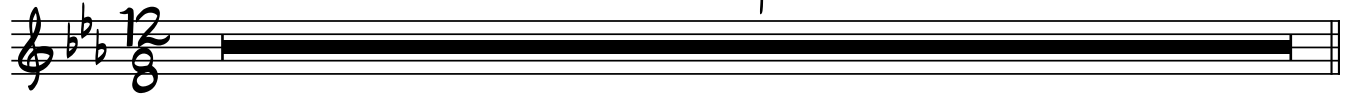
WHEN A MAN LOVES A WOMAN

Bette Midler

Arranged by Maurizio Rossetto

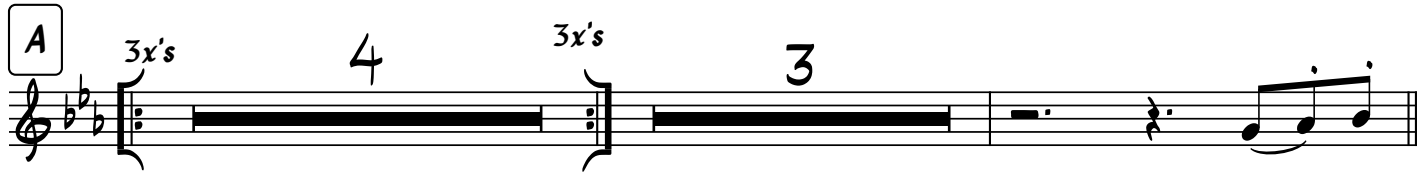
12/8 ballad

4



A

3x's 4 3x's 3



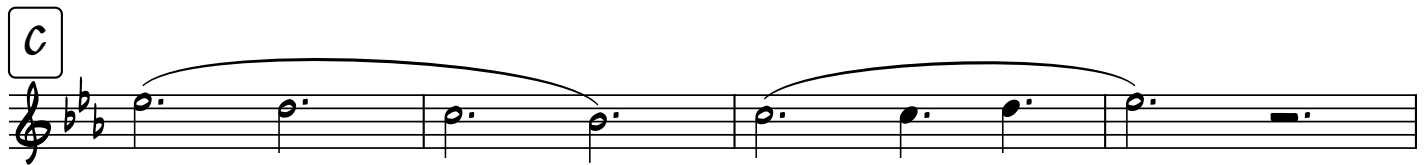
B



17



C



25



D



33 2

E Horns soli (opt. guit. solo)

40

43

F

49 Vocal break a tempo

G Conducted a tempo

Trumpet II

WHEN A MAN LOVES A WOMAN

Bette Midler

Arranged by Maurizio Rossetto

12/8 ballad

4

A

3x's 4 3x's 3

B

17

C

25

D

33 2

E Horns soli (opt. guit. solo)

40

43

F

49 Vocal break a tempo

G Conducted a tempo