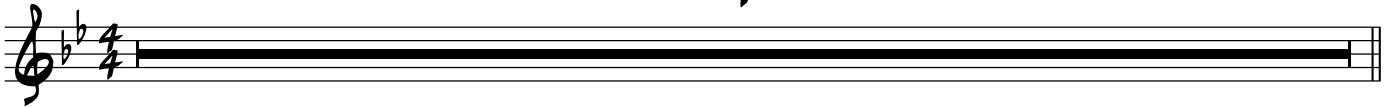


MY GUY

♩ = 125 (Swung ♩'s)

4



A

5

(1.) Noth-in' you can say can tear me a-way from my guy

(2.) Noth-in' you can do could make me un-true to my guy

9

Noth-in' you can do 'cause I'm stuck like glue to my guy I'm

Noth-in' you could buy can make me tell a lie to my guy I

B

13

stick-in' to my guy like a stamp to a let-er. Like birds of a feath-er we stick to-geth-er. I'm

gave my guy my word of hon - or to be faith - ful and I'm gon - na. You'd

17

tell-in' ya from the start; I can't be torn a-part from my guy

best be bel-ieve-in' I won't be disc-iev-in' my guy

20

1. 2.

As a

22

**C**

mat-ter of op-in-ion I think he's tops My op-in-ion is he's the cream of the crop As a

26

mat-ter of taste to be ex-act\_ He's my i-deal, as a mat-ter of face No\_

30

**D**  $\text{S}$

mus-cle bound man could take\_ my hand\_ from my\_ guy\_ No

34

hand-some face\_ will ev-er take the place of my\_ guy\_ He

38

**E**

To Coda  $\text{C}$

may not be a mo-vie star but when it comes to be-in'hap-py we are. There's not a

MY GUY

Vocals

42 **F**

man to-day who could take me a-way from my guy

46 **G** 3

No

*D.S. al Coda*

50 Coda

man to-day who could take me a-way from my

52

For More Adlib Last X

guy rit. . . . .

Trumpet II

# MY GUY

Mary Wells

♩ = 125 (Swung ♩'s)

*p* *mp*

(Vocals)

5 **A** 2nd X Only

*mp*

*mf*

13 **B** Both Xs

*mp*

*mp*

*f*

*f*

22 **C**

*mf*

*mf*

2

Trumpet II

My Guy

30 **D**  $\text{♩}$

*mp*

34

*mf*

38 **E**

*mp* To Coda  $\text{⊕}$

42 **F** 2

*mp* *f*

46 **G**

*p* *mp*

*D.S. al Coda*

50 **Coda**  $\text{⊕}$  2

*mp* *f* *f rit.*

For More Adlib | Last X

Trumpet I

# MY GUY

Mary Wells

♩ = 125 (Swung ♩'s)

*p* *mp*

(Vocals)

**A** 2nd X Only

5

*mp*

9

*mf*

**B** Both Xs

13

*mp*

16

*mp* *f* *f*

**C**

22

*mf*

26

*mf*

2

Trumpet I

o MY GUY o

30 **D**  $\text{\textcircled{F}}$

mp

34

mf

38 **E**

mp

To Coda  $\text{\textcircled{C}}$

42 **F**

mp

f

46 **G**

p

mp

D.S. al Coda

Coda  $\text{\textcircled{C}}$

mp

f

f

rit. . . .

For More Adlib

Last X

Trombone

# MY GUY

Mary Wells

♩ = 125 (Swung ♭'s)

*p* *mp*

(Vocals)

**A** 2nd X Only

*mp*

*mf*

**B** Both Xs

*mp*

*mp* *f* *f*

**C**

*mf*

*mf*



2

Trombone

MY GUY

30 **D** *mp*

34 *mf*

38 **E** *mp* To Coda ⊕

42 **F** *mp* **2** *f*

46 **G** *p* *mp* *f* *D.S. al Coda*

Coda ⊕ *mp* *f* *f* *rit.*

*For More Adlib* *Last X*

Tenor Saxophone

# MY GUY

Mary Wells

♩ = 125 (Swung ♩'s)

*p*

(Vocals)

**A** 2nd X Only

*mp*

*mf*

**B** Both Xs

*mp*

*mp* *f* *f*

**C**

*mf*

*mf*

2

Tenor Saxophone

My Guy

30 **D** *mp*

34 *mf*

38 **E** *mp* To Coda

42 **F** *mp* **2** *f*

46 **G** *p*

D.S. al Coda

Coda **50** **2** *mp* *f* *f rit.*

For More Adlib Last X

Baritone Saxophone

# MY GUY

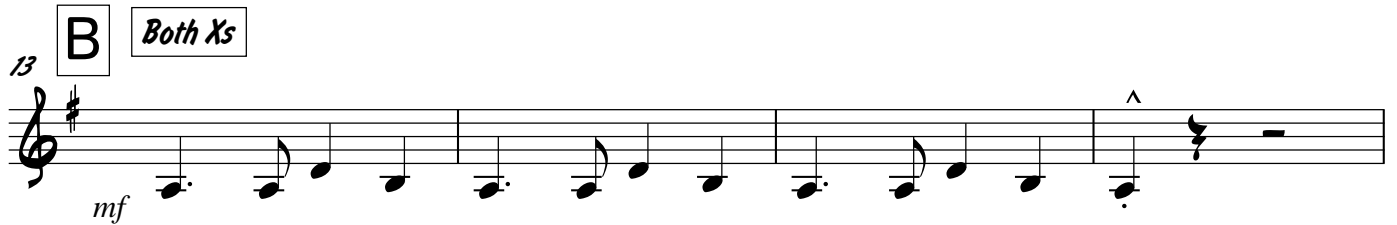
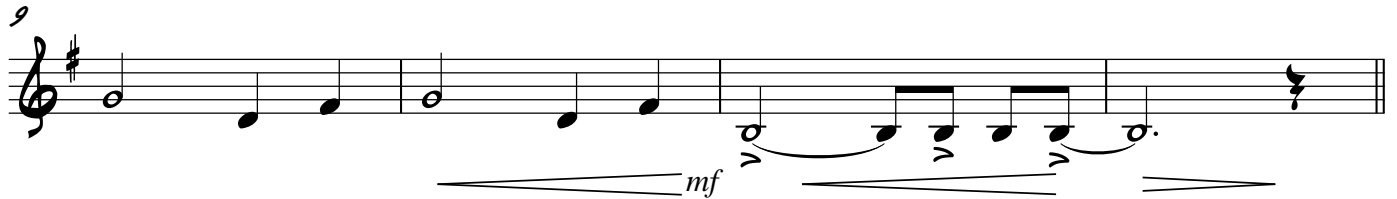
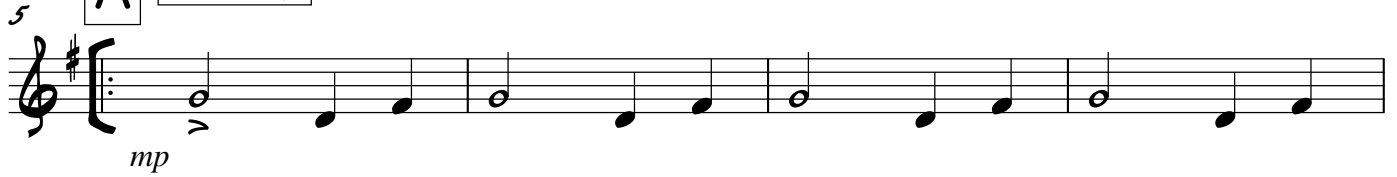
Mary Wells

♩ = 125 (Swung ♩'s)

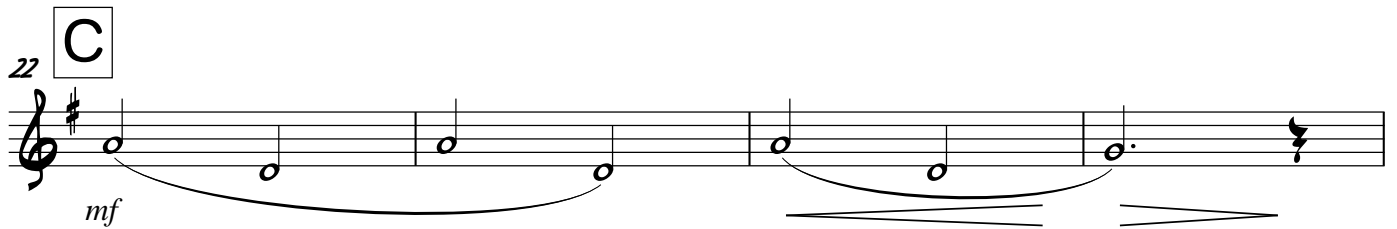
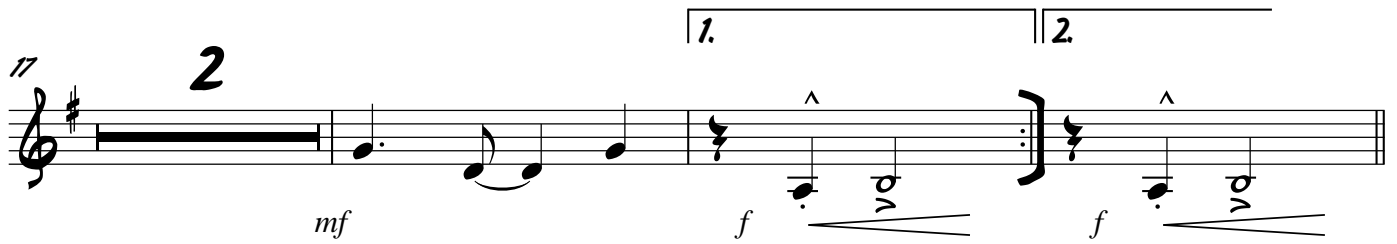


*p*  
(Vocals)

**A** 2nd X Only



**B** Both Xs



**C**



Baritone Saxophone

My Guy

30 **D** *mp*

34 *mf*

38 **E** *mf* To Coda

42 **F** *mf* **2** *f*

46 **G** *p* *D.S. al Coda*

Coda **2** *mf* *f* *f* *rit.*

For More Adlib Last X

Alto Saxophone

# MY GUY

Mary Wells

♩ = 125 (Swung ♩'s)

*p* *mp*  
(Vocals)

**A** 2nd X Only

*mp*

*mf*

**B** Both Xs

*mp*

*mp* *f* *f*

**C**

*mf*

*mf*

Alto Saxophone

o MY GUY o

30 **D**  $\text{\textcircled{S}}$

*mp*

34

*mf*

38 **E**

*mp* To Coda  $\text{\textcircled{C}}$

42 **F** 2

*mp* *f*  $\text{\textcircled{C}}$

46 **G**

*p* *mp* D.S. al Coda

Coda  $\text{\textcircled{C}}$  50 2

*mp* *f* *f* rit. . . . Last X  $\text{\textcircled{C}}$

Organ

# MY GUY

Mary Wells

♩ = 125 (Swung ♩'s)

N.C.

Cm Dm

*p* *f*

(Vocals)

**A** Bbmaj7 Bb6 Bbmaj7 Bb6 Bbmaj7 Bb6 Bbmaj7 Bb6 Bbmaj7

*mf* *sim...*

Bb6 Bbmaj7 Bb6 Bbmaj7 Bb6 Bbmaj7 D7

**B** Cm7 F Cm7 F Cm7 F Cm7 Bb Gm7

C7 F7 Bbmaj7 Bb6 Bbmaj7 1. Cm Dm 2. Cm Dm

*f* *f*

**C** Cm7 F7 Cm7 F7 Cm7 F7 Bb

*f*

Gm Dm7 Gm Dm7 C7 F



2

**S.**

Organ

MY GUY

30 **D** Bbmaj7 Bb6 Bmaj7 Bb6 Bbmaj7 Bb6 Bbmaj7

*mf* *sim...*

33 Bb6 Bbmaj7 Bb6 Bbmaj7 Bb6 Bbmaj7 D7

38 **E** Cm7 F Cm7 F Cm7 F Cm7 To Coda

42 **F** Bb Gm7 C7 F7 Bbmaj7 Bb6 Bbmaj7 Cm Dm7

*f* *mf* *f*

46 **G** N.C. Cm Dm

*p* *f*

*D.S. al Coda*

For More Adlib | Last X

50 **Coda** Bbmaj7 Bb6 Bbmaj7 Cm Dm7 F Bbmaj7

*mf* *f* *f*

*rit...*

Guitar

# MY GUY

Mary Wells

♩ = 125 (Swung ♩'s)

N.C.

Cm Dm

(Vocals)

**A**

Bbmaj7

Bb6 Bbmaj7

Bb6 Bbmaj7

Bb6 Bmaj7

Bb6 Bbmaj7

Bb6 Bbmaj7

Bb6 Bmaj7 D7

**B**

Cm7

F

Dm7 Cm7

F

Dm7 Cm7

F

Dm7 Cm7

(F7)

Bb

Gm7

C7

F7

Bbmaj7

Bb6 Bbmaj7

1. Cm Dm

2. Cm Dm

**C**

Cm7

F7

Cm7

F7

Cm7

F7

Bb

Gm

Dm7

Gm

Dm7

C7

F

2



Guitar

MY GUY

30 **D** Bb<sup>MAJ7</sup> Bb<sup>6</sup> B<sup>MAJ7</sup> Bb<sup>6</sup> Bb<sup>MAJ7</sup> Bb<sup>6</sup> Bb<sup>MAJ7</sup> Bb<sup>6</sup> Bb<sup>MAJ7</sup>

34 Bb<sup>6</sup> Bb<sup>MAJ7</sup> Bb<sup>6</sup> Bb<sup>MAJ7</sup> D7

38 **E** Cm<sup>7</sup> F Dm<sup>7</sup> Cm<sup>7</sup> F Dm<sup>7</sup> Cm<sup>7</sup> F Dm<sup>7</sup> Cm<sup>7</sup> (F7) To Coda

42 **F** Bb (Light Fills) Gm<sup>7</sup> C7 F7 Bb<sup>MAJ7</sup> (End Fills) Bb<sup>6</sup> Bb<sup>MAJ7</sup> Cm Dm<sup>7</sup>

46 **G** N.C. Cm Dm

D.S. al Coda

50 **Coda** For More Adlib Last X

Bb<sup>MAJ7</sup> Bb<sup>6</sup> Bb<sup>MAJ7</sup> Cm Dm<sup>7</sup> F Bb<sup>MAJ7</sup>

Drums

# MY GUY

Mary Wells

♩ = 125 (Swung ♩'s)

1-4

5 (Vocals) **A**

8

13 **B**

18

22 **C**

25

28

30 **D**

33

38 **E**

42 **F**

46 **G**

D.S. al Coda

Coda

52

Bass

# MY GUY

Mary Wells

♩ = 125 (Swung ♩'s)

N.C.

Cm Dm

1 *p* *f*

(Vocals)

5 **A** Bb<sup>6</sup> Bb<sup>MAJ</sup>7 Bb<sup>6</sup> Bb<sup>MAJ</sup>7 Bb<sup>6</sup> Bb<sup>MAJ</sup>7 Bb<sup>6</sup> B<sup>MAJ</sup>7 Bb<sup>6</sup> Bb<sup>MAJ</sup>7

*mf*

9 Bb<sup>6</sup> Bb<sup>MAJ</sup>7 Bb<sup>6</sup> B<sup>MAJ</sup>7 D7

*mf*

13 **B** Cm<sup>7</sup> F Dm<sup>7</sup> Cm<sup>7</sup> F Dm<sup>7</sup> Cm<sup>7</sup> F Dm<sup>7</sup> Cm<sup>7</sup> (F7)

*mf*

17 Bb Gm<sup>7</sup> C7 F7 Bb<sup>MAJ</sup>7 Bb<sup>6</sup> Bb<sup>MAJ</sup>7 Cm Dm Cm Dm

*mf* *f*

22 **C** Cm<sup>7</sup> F7 Cm<sup>7</sup> F7 Cm<sup>7</sup> F7 Bb

*f*

26 Gm Dm<sup>7</sup> Gm Dm<sup>7</sup> C7 F

*f*

2

MY GUY

Bass

30 **D** Bbmaj7 Bb6 Bmaj7 Bb6 Bbmaj7 Bb6 Bbmaj7 Bb6 Bbmaj7

mf

34 Bb6 Bbmaj7 Bb6 Bbmaj7 D7

mf

38 **E** Cm7 F Dm7 Cm7 F Dm7 Cm7 F Dm7 Cm7 (F7) To Coda

mf

42 **F** Bb Gm7 C7 F7 Bbmaj7 Bb6 Bbmaj7 Cm Dm7

f mf f

46 **G** N.C. Cm Dm

p f

D.S. al Coda

50 **Coda** Bb Gm C7 F7

mp

52 Bbmaj7 Bb6 Bbmaj7 **For More Adlib** Cm Dm7 **Last X** F Bbmaj7

mf f f rit..